

Battery Holders

Surface Mounting Technology (SMT)




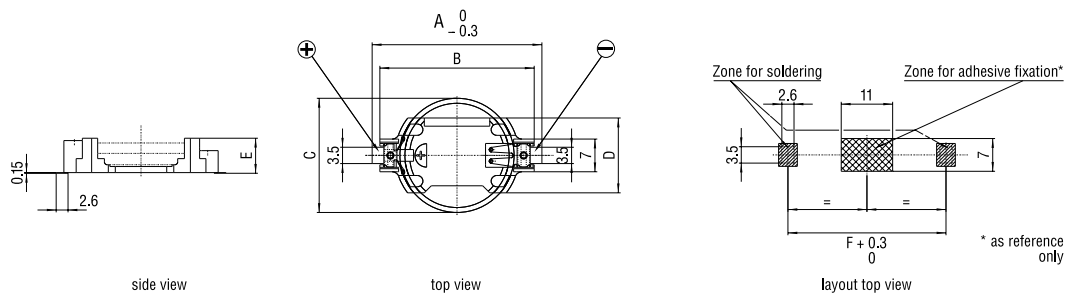
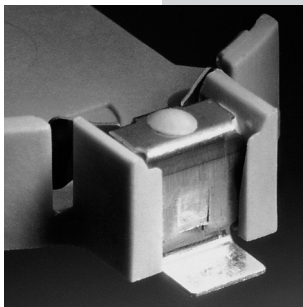
Horizontal mounting

Features

- Easy and fast replacement of the battery
- Designed for automatic pick&place mounting
- Safe retention of coin cell
- Automated battery mounting possible
- Clear separation of connections
- Protection against short-circuits
- Protection against inverse polarity (polarized)
- Protection against leak currents
- Robust design
- Suitable for reflow-soldering

Specifications

- Holder material: heat-resistant, glass fibre filled LCP
- Flammability rating UL 94 V-0
- Battery contacts: spring stainless steel AISI 301, nickel-plated throughout. Solder area tin-plated throughout, min. thickness 5 μm .
- Contact resistance between contacts and the cell is less than 100 $\text{m}\Omega$ (measured through AC 1kHz; depending on the case material of the cell).
-  UL recognition, file E218732
- Operating temperature range: $-40/+100^{\circ}\text{C}$



Dimensions

Model	For use with Renata cell	Dimensions (mm)						Weight (g)	Part.No.*
		A	B	C	D	E	F		
SMTU357-LF	357 (SR44W)	23.3	19.9	11.6	12.0	7.55	20.7	0.85	701132
SMTU1220-LF	CR1220	23.7	20.3	12.5	12.7	4.8	21.1	0.80	701114
SMTU1225-LF	CR1225	23.7	20.3	12.5	12.7	4.8	21.1	0.70	701115
SMTU1632-LF	CR1632	27.7	24.3	16.0	14.5	5.4	25.1	0.80	701130
SMTU2032-LF	CR2032	32.0	28.5	20.0	16.1	5.4	29.4	0.95	701116
SMTU2430-LF	CR2430	36.4	33.0	24.5	16.1	4.9	33.8	1.05	701117
SMTU2450N-LF	CR2450N ¹⁾	36.4	33.0	24.5	16.1	7.5	33.8	1.45	701118
SMTU2477N-LF	CR2477N	36.4	33.0	24.5	16.1	10.3	33.8	1.65	701119
SM2X2016-LF	CR2016	32.0	28.5	20.0	16.1	5.4	29.4	0.95	701113

*Packaging: Industrial Bulk (B-Trays)

1) Not suitable for CR2450HT